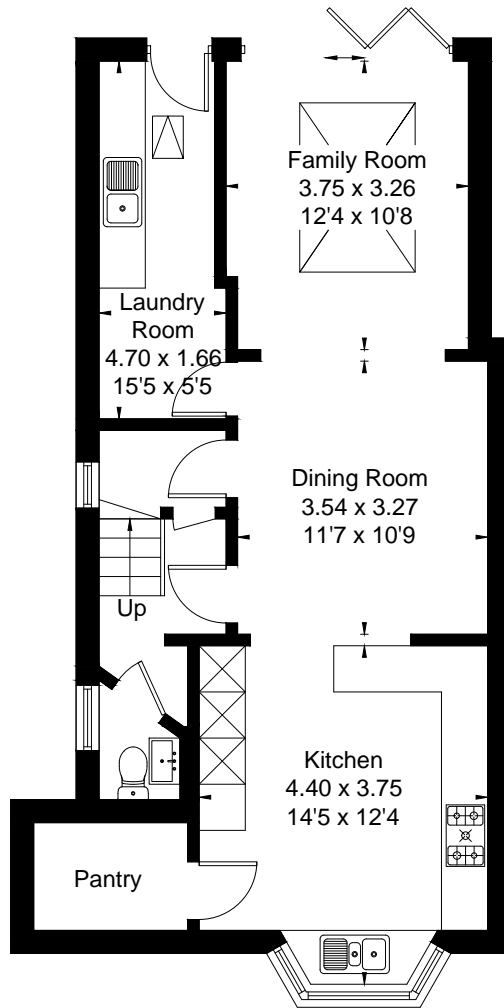


Approximate Floor Area = 172.5 sq m / 1857 sq ft

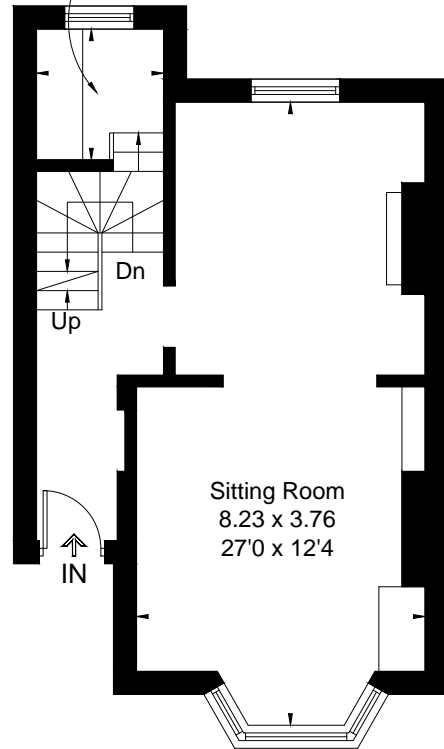
Studio = 13.3 sq m / 143 sq ft

Total = 185.8 sq m / 2000 sq ft

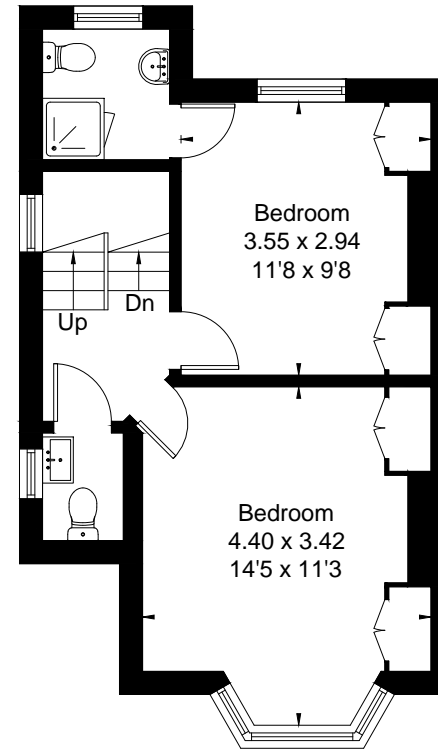


Lower Ground Floor

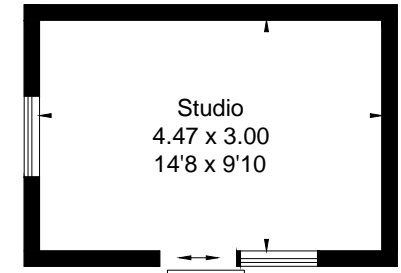
Study
1.71 x 1.68
5'7 x 5'6



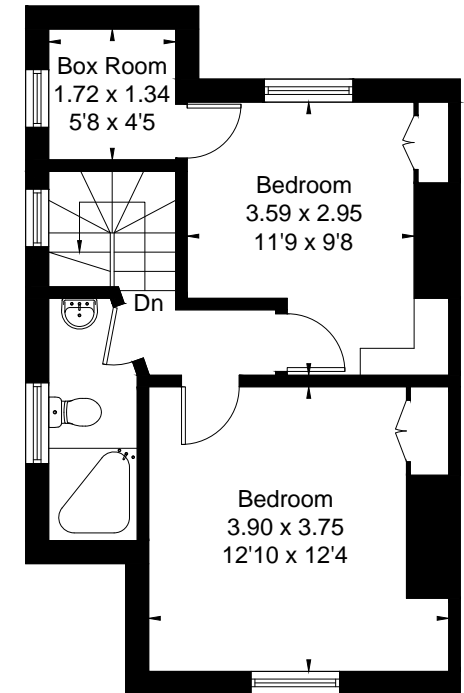
Ground Floor



First Floor



(Not Shown In Actual
Location / Orientation)



Second Floor



This floor plan has been drawn in accordance with RICS Property Measurement 2nd edition.

All measurements, including the floor area, are approximate and for illustrative purposes only. @fourwalls-group.com #74727